

# Mega-U600 / V600

## Reliable and Compact UV-Vis Spectrophotometer

The Mega-U600 / V600 is a reliable and compact split-beam spectrophotometer with a fixed 2 nm spectral bandwidth.

Mega-600 series offer two choices to select according to the wavelength range either UV to Visible or Visible Only. Mega-U600 allows UV to Visible range; 190-1100 nm while Mega-V600 is only for Visible range; 325 – 1100 nm. The instrument has a switched mode power supply accepting voltages in the range of 95 - 240V AC and supplied with either universal pathlength 5 cell changer or fixed path length 8 cell changer as standard. Mega-U600 / V600 delivers the functionality and accuracy of an advanced instrument at an affordable price.

### FEATURES & FUNCTIONS



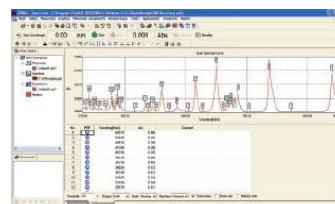
- Local control software for photometric fixed wavelength measurement
- Split-beam geometry to make accurate measurements
- High performance fixed 2nm spectral bandwidth.
- Low stray light 0.05%T (Mega-U600)
- Wavelength accuracy  $\pm 1$ nm (Mega-U600)
- Holographic blazed grating 1200lines/mm
- Easily upgraded to include quantitative analysis, multi wavelength spectrum & kinetics
- Built in cell holder storage
- Robust modular design with a small footprint
- Can be used with LabPro®Scan software

### LabPro®Scan Software

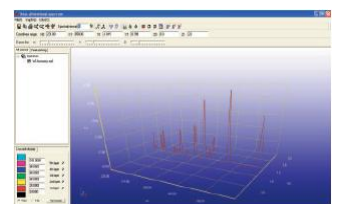
The LabPro®Scan is a powerful, intuitive Software product used for connectivity to Scinco instruments range of bench top UV-Vis Spectrophotometers.

LabPro®Scan software offers complete instrument control along with data acquisition and a whole host of mathematical tools for interpretation of measurement results. LabPro®Scan software is separated into four key workspaces.

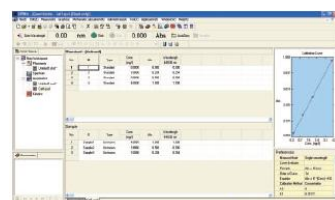
- Spectral Analysis
- Quantitative Analysis
- Kinetic Analysis
- Photometric Analysis



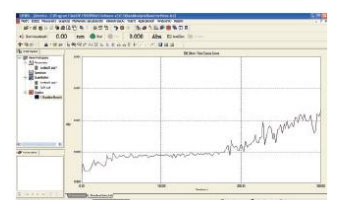
Spectrum Workspace



3D Spectrum View



Quantification Workspace



Kinetics Workspace

# Specifications

	Mega-U600	Mega-V600
Optical System	Split beam geometry	
Light Source	Deuterium and Tungsten Lamp	Tungsten Lamp
Detector	Silicon photodiodes	
Wavelength Range	190 ~ 1100 nm	325 ~ 1100 nm
Wavelength Accuracy	±1.0 nm	±2.0 nm
Wavelength Reproducibility	≤0.2 nm	≤0.4 nm
Spectral Bandwidth	2 nm	
Photometric Mode	Transmittance, Absorbance, Energy Concentration	
Photometric Range	-0.3 ~ +3.0 Abs	
Photometric Accuracy	±0.3 %T (0-100%T)	
Photometric Reproducibility	≤0.15 %T (0-100%T)	
Photometric Noise	≤0.001A (500 nm)	
Baseline Flatness	±0.002 A (200 – 1000 nm), 1 hour warm-up	±0.002 A (325 – 1000 nm), 1 hour warm-up
Baseline Stability	≤0.001 A/h (500 nm, 0 Abs), 2 hour warm-up	≤0.002 A/h (500 nm, 0 Abs), 2 hour warm-up
Stray Light	< 0.05%T at 220 nm NaI and 340 nm NaNO <sub>2</sub>	< 0.1%T at 340 nm NaNO <sub>2</sub>
Connectivity	RS-232	
Dimensions	476 (W) x362(D) x 225(H) mm	
Weight	11 Kg	

## Accessories for Mega-U600 / V600



**Program Cards**  
[Quantification, Spectrum]



**Sipper System**



**Adjustable angle sample Holder**



**Test Tube Holder**

### Standard configuration

- 1 X System
- 1 X universal pathlength 5 cell changer or fixed pathlength 8 cell changer
- 1 X Certificate of conformity
- 1 pair of quartz cell (Mega-U600) or glass cell (Mega-V600)
- 1 X Quantitative program card (Mega-U600 only)
- 1 X Black Block for dark current correction
- 1 X Fuse
- 1 X Power cord
- 1 X Instruction manual
- 1 X Packing List
- 1 X LabPro®Scan PC Software

Copyright© 2016 SCINCO CO., LTD. All rights reserved. All configurations and specifications are subject to change without notice.

**scinco**

Website: [www.scinco.com](http://www.scinco.com)  
E-mail: [scinco@scinco.com](mailto:scinco@scinco.com)

### SCINCO

627, Bongeunsa-ro, Gangnam-gu, Seoul 06083 Korea  
Tel: +82-2-2143-8200 Fax: +82-2-2143-8355

### R&D Center

746, Daedeok-daero, Yuseong-gu, Daejeon 34055 Korea  
Tel: +82-42-610-7400 Fax: +82-42-610-7500