

APK2350 : Thermal Desorber



Feature

- 다양한 분석기기와의 호환성
- 우수한 정확성
- 뛰어난 성능과 합리적인 가격
- 흡착관 자동 분석 (APK2360)
- Sampling Bag 자동 분석 (APK2600)

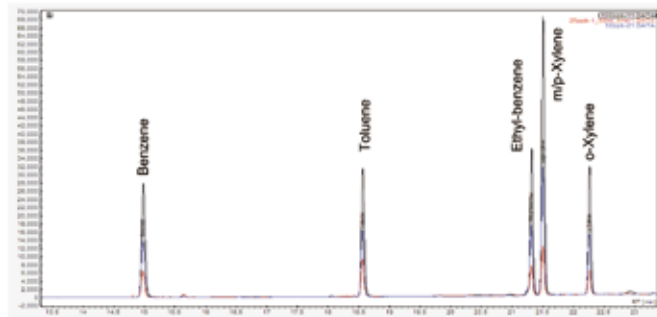
Specification

APK2350

APK2350-OS (Online Sampler)

Item	Contents	Item	Contents
Cooler Type	Peltier	Cooler Type	Peltier
Cooling Temp.	Below -20°C	Cooling Temp.	Below -20°C
Focusing Trap	Single or Multi-bed	Focusing Trap	Single or Multi-bed
No. of Tube	Only single (manually)	No. of Sampling Bag	Only single (manually)
1 st Trap Heating Temp.	Max. 400°C	MFC	0 – 200 mL/min
Purging Gas	adjustable	Sampling Pump	Max. 7.5 L/min
Control Program	APK Control II	Control Program	APK Control II
Transfer Line	Silco-steel®, 1/32", Max. 200°C	Transfer Line	Silco-steel®, 1/32", Max. 200°C
Power	110 or 220VAC, 50/60Hz	Power	110 or 220VAC, 50/60Hz
Dimension	250 x 570 x 445mm (W,D,H)	Dimension	250 x 570 x 445mm (W,D,H)

Application



Standard	Area			RSD (%)
	1st	2nd	3rd	
Benzene	943.8	922.7	909.6	1.9
Toluene	896.4	931.4	917.6	1.9
Ethyl-benzene	967.4	960.1	947.5	1.1
m/p-Xylene	1545.4	1576.3	1578.4	1.2
o-Xylene	753.1	766.9	744.8	1.5

TD	GC
<ul style="list-style-type: none"> • 1st Desorp. and Purging Gas (Sorbent Tube) : 250°C for 15min and N2 50mL/min • Focusing : -20°C for 15min • Desorp. : 250°C for 1min • Injection : 250°C for 5min 	<ul style="list-style-type: none"> • Detector : FID • Oven temp. : 80°C, 10min → 10°C/min → 200°C, 3min • Column : VB-624 (60m × 0.32mm × 1.8μm) • Column Flow : 1.0 mL/min • Split Ratio 10 : 1

APK2360 : Automated Desorption Unit



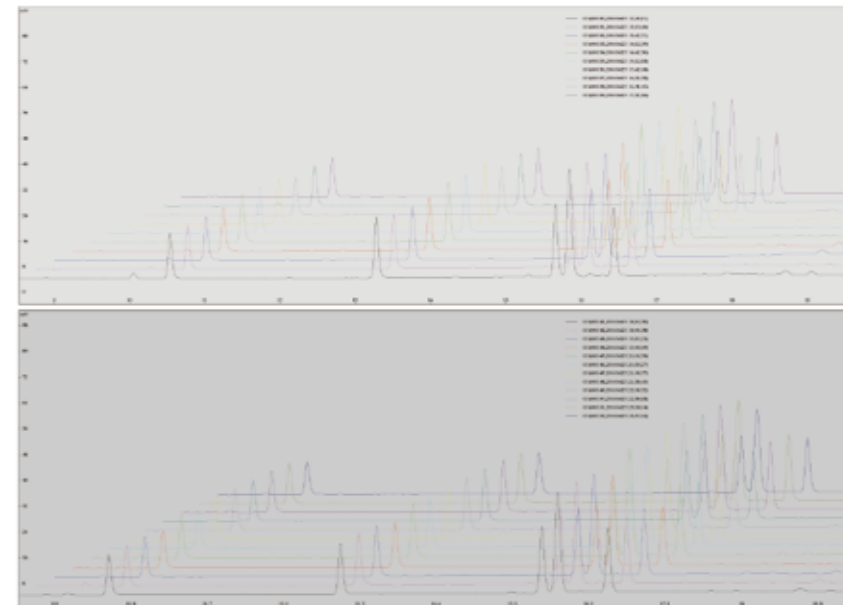
Feature

- 흡착관 자동 열탈착장치
- 최대 24개 흡착관 장착
- APK2350 + APK2360 결합
- 연속적으로 자동 분석 가능
- Cold point 최소화
- 쉽고 편리한 기기 운영

Specification

Item	Contents
No. of Tube	24 tubes
Tube Size	1/4" (O.D), 3.5" (L)
1 st Trap Heating Temp.	Max. 400°C
Purging Gas Flow	about 100 mL/min (not adjustable)
Control Program	APK Control II
Transfer Line	Silco-steel®, 1/32", Max. 200°C
Power	110 or 220VAC, 50/60Hz
Dimension	250 x 570 x 445mm (W,D,H)

Application



Analysis Condition

- TD & ADU
- 1st Desorp. : 250°C for 5min with N2 50mL/min
 - Focusing : -20°C for 5min
 - Desorp. : 250°C for 1min
 - Injection : 250°C for 5min
- GC
- Detector : FID
 - Oven temp. : 80°C, 10min → 10°C/min → 200°C, 3min
 - Column : VB-624 (60m×0.32mm×1.8μm)
 - Column Flow : 1.0 mL/min
 - Split Ratio 10 : 1

APK2600 : Multi - Sampler



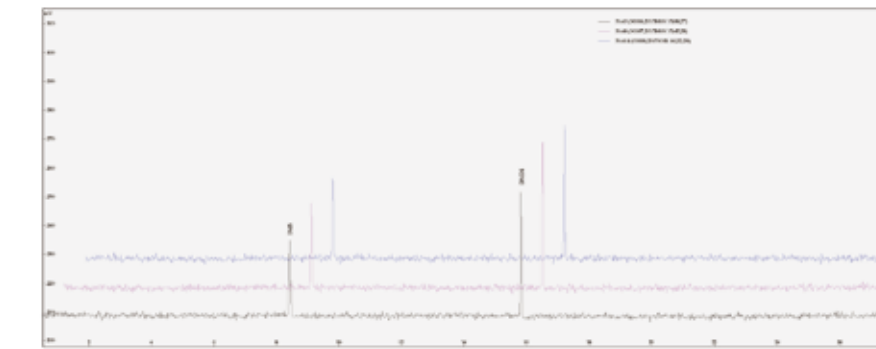
Feature

- Sampling Bag
- 최대 15개 Sampling Bag 장착
- APK2350 + APK2600 결합
- 연속적으로 자동 분석 가능
- 시료의 변성 및 손실 최소화
- 쉽고 편리한 기기 운영

Specification

Item	Contents
Sample Port	1 ~ 16 Port (port 1 is always open)
Sample Line	Silco-steel® or Sulfinert
Signal I/O	GC/Analyzer Ready In, TD Start Out
Control Program	APK2600
Transfer Line	Silco-steel®, 1/32", Max. 200°C
Power	110 or 220VAC, 50/60Hz
Dimension	200 x 424 x 372mm (W,D,H)

Application



Analysis Condition

- GC
- Detector : FPD
 - Oven temp. : 40°C, 7min → 10°C/min → 200°C, 3min
 - Column : DB-1 (60m×0.32mm×2μm)
 - Column Flow : 2.0 mL/min
 - Split Ratio 10 : 1

Standard	Area			RSD' (%)
	3 port	8 port	14 port	
DMS	98,909	103,862	101,598	2.44
DMDS	109,595	105,876	102,135	3.52

- TD
- Focusing : -80°C for 10min
 - Desorp. : 100°C for 0.5min
 - Injection : 250°C for 5min